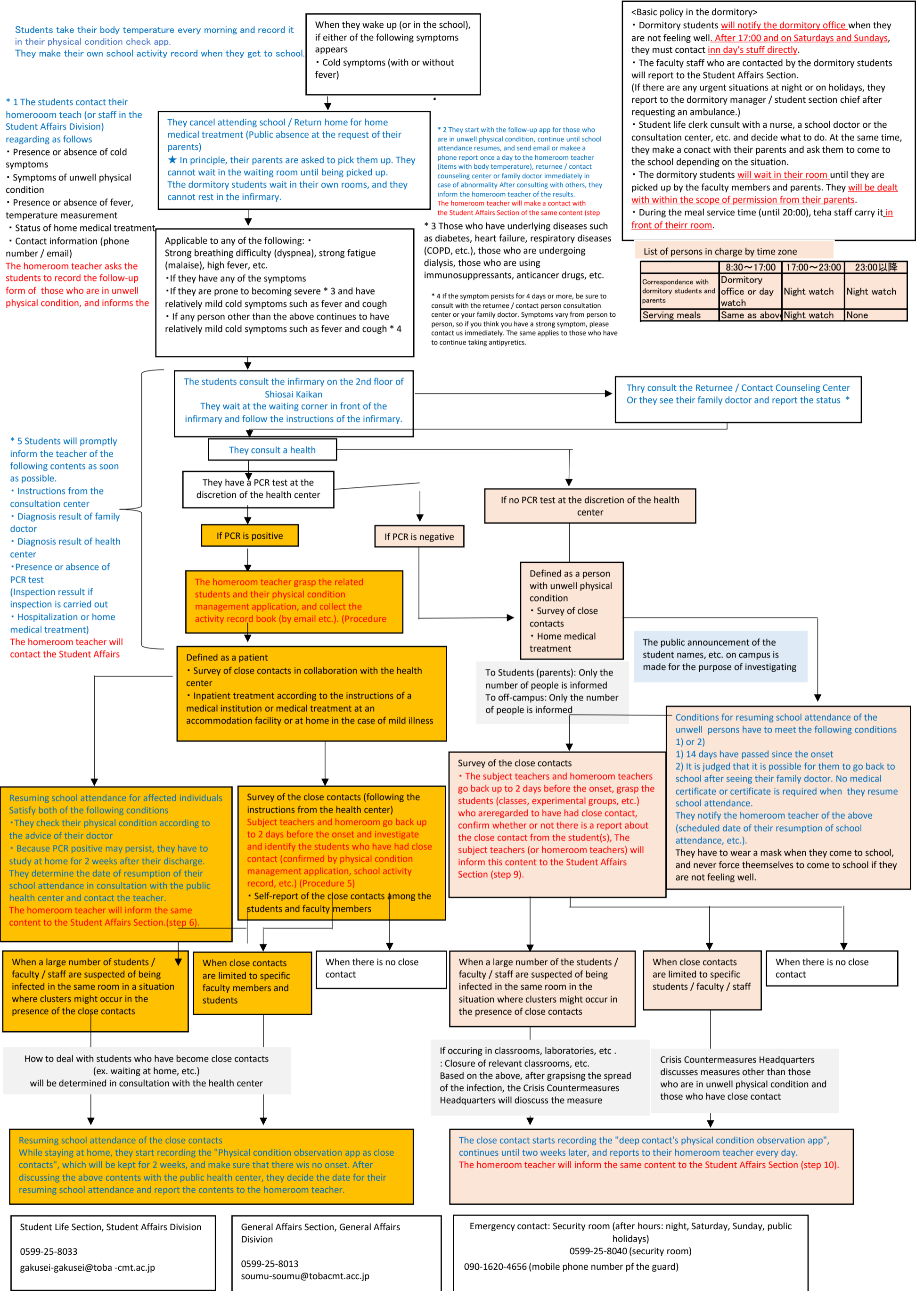


Correspondence to unwell students (Correspondence of students and correspondence of their homeroom teacher / subject teacher)



This document is about "New Coronavirus Information: Measures Required for Companies and Individuals", New Coronavirus Infectious Diseases of the Ministry of Health, Labor and Welfare, prepared by the Occupational Health Committee of the Japan Society for Occupational Health and the Japan Society for Occupational Health Overseas Work Health Management Study Group. Based on the presentation materials, we created it according to our school and asked an industrial physician to confirm it.